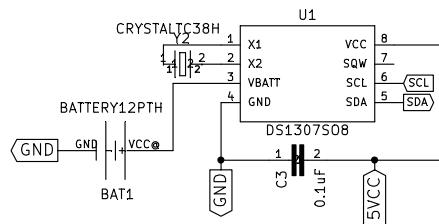


Pinout Information
 PC0 – PC3: Common cathode Outputs for display
 PB0–PB5,PD6–PD7: Display row anodes
 PC4 & PC5: SDA * SCL for I2C to RTC
 PD0 & PD1: RX & TX for Serial
 PD2 & PD3: Mode & Change buttons



File: EpochClock.sch	
Sheet: /	
Title:	
Size: A4	Date: 3 apr 2013
KiCad E.D.A. eschema (2013-07-07 BZR 4022)-stable	Rev: 1/1